

The logo features a stylized white icon of a foot with a circular sole, positioned to the left of the text.

Barefoot[®] Go

Product Information



The Barefoot Go portable solar light has been specifically designed to meet the needs of rural markets.

The ultra-bright lamp can illuminate an entire room or shop. Multiple brightness settings allow the user to conserve power until it's needed.

Barefoot Go includes a 1 Amp USB output capable of charging many smart phones and other devices.

The versatile design and stand make Barefoot Go perfect for any location and situation.

Barefoot Go includes a 2.5W polycrystalline solar panel combined with microprocessor-controlled battery management to maximize battery performance and life.

Barefoot Go and all included components are backed by a comprehensive 24-month warranty.



Product Highlights:

Signature design developed in Australia by Barefoot Power

Bright 75-lumen LED lamp

24-month warranty on all components

Multiple light settings night light (28 hours) bright (9 hours) and ultra bright (5 hours)

Next power off pressing the power button will always turn the lamp off once it's been on for more than five seconds

Sleep mode press the power button for 5 seconds and the lamp will enter a sleep mode to conserve power

Three-stage battery charge indicators low, medium and high

Charging indicators will flash when battery is charging

Full-battery indicators will double flash every 10 seconds when the battery is full

Low-battery indicator will flash once every 20 seconds when battery capacity is low

USB compatibility for charging the lamp

Auto-dim will dim the lamp automatically to conserve power when battery capacity is low

Barefoot Connect compatibility for charging the lamp

Versatile design can be used in nine different positions

1.5W solar panel with 3.5m cable

1.5Ah LiFePO4 Battery the longest-lasting battery in its class

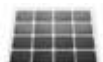


BATTERY



3.2V 1.5Ah

SOLAR PANEL



1.5W

RUN TIME



5 - 28 HOURS

Product Highlights:

Signature design developed in Australia by Barefoot Power

Ultra bright 135-lumen LED lamp is the brightest in its class

24-month warranty on all components

Multiple light settings night light (60 hours) bright (12 hours) and ultra bright (6 hours)

USB output for charging mobile phones and many smart phones

USB phone-charging kit included

Next power off pressing the power button will always turn the lamp off once it's been on for more than five seconds

Sleep mode press the power button for 5 seconds and the lamp will enter a sleep mode to conserve power

Three-stage battery charge indicators low, medium and high

Charging indicators will flash when battery is charging

Full-battery indicators will double flash every 10 seconds when the battery is full

Low-battery indicator will flash once every 20 seconds when battery capacity is low

USB compatibility for charging the lamp

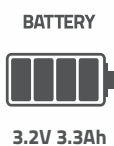
Auto-dim will dim the lamp automatically to conserve power when battery capacity is low

Barefoot Connect compatibility for charging the lamp

Versatile design can be used in nine different positions

2.5W solar panel the largest available for a single-lamp product (4m cable)

3.3Ah LiFePO4 Battery the largest and longest-lasting battery in its class



Product Highlights:

Signature design developed in Australia by Barefoot Power

Ultra bright 135-lumen LED lamp is the brightest in its class

24-month warranty on all components

Multiple light settings night light (60 hours) bright (12 hours) and ultra bright (6 hours)

USB output for charging mobile phones and many smart phones.

Next power off pressing the power button will always turn the lamp off once it's been on for more than five seconds

Sleep mode press the power button for 5 seconds and the lamp will enter a sleep mode to conserve power

Three-stage battery charge indicators low, medium and high

Charging indicators will flash when battery is charging

Full-battery indicators will double flash every 10 seconds when the battery is full

Low-battery indicator will flash once every 20 seconds when battery capacity is low

USB compatibility for charging the lamp

Auto-dim will dim the lamp automatically to conserve power when battery capacity is low

Barefoot Connect compatibility for charging the lamp

Versatile design can be used in nine different positions

2.5W solar panel the largest available for a single-lamp product (4m cable)

3.3Ah LiFePO4 Battery the largest and longest-lasting battery in its class

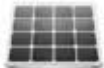


BATTERY



3.2V 3.3Ah

SOLAR PANEL



2.5W

RUN TIME



6 - 60 HOURS



RADIO



PHONE

Barefoot Go Installation Instructions

1. Permanently install the solar panel on the roof in a position that receives full sunshine all day. The solar panel is weatherproof.
2. Turn lamp on and off to activate and plug the solar panel into the lamp to charge the battery.
3. When charging, the battery status LEDs will flash.
4. **IMPORTANT:** Barefoot Go must be fully charged before it is used for the first time to calibrate the system. It must also be fully charged at least once per week.
5. **IMPORTANT:** When the battery is full, the LEDs will double flash every 10 seconds.
6. Press the power button to turn the lamp on and toggle between ultra, bright and night light settings.
7. Barefoot Go includes a battery status ring. One segment indicates low battery; two segments, medium battery; and three segments, full battery.
8. Each time the power button is pressed, the battery status indicators will illuminate for 5 seconds.
9. When the battery is low, the lamp will automatically dim to a lower light setting and the low-battery LED will flash.
10. If a stand is included, assemble the stand by inserting the three metal legs into the stand ring. Do not disassemble stand once constructed.

11. Barefoot Go includes a 1Amp USB output for charging mobile phones and other devices. Barefoot Go will not charge devices which draw more than 1Amp.

Some compatible devices with large batteries should only be charged when the Barefoot Go battery is full, and ideally when the panel is in full sun.

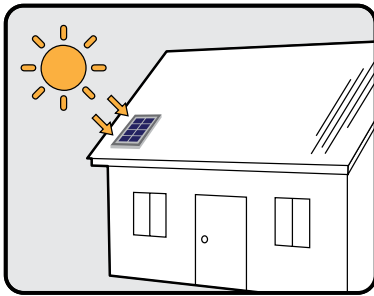
12. If the USB is overloaded, a fuse will activate to protect the lamp and battery. Remove any device plugged into the USB - the fuse will automatically reset within 10 seconds.

13. If transporting or storing Barefoot Go for an extended period of time, hold the power button down for five seconds to put the lamp into sleep mode. This will shut down all functions to conserve battery power.

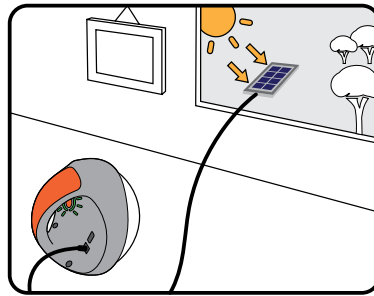


Warranty All components guaranteed for 24 months from date of purchase by first user. The warranty is not valid if product is misused or damaged by the user. For warranty terms and conditions please contact Barefoot Power at info@barefootpower.com

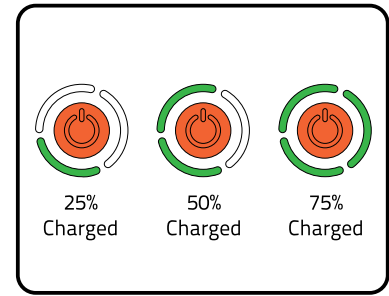
Barefoot Go Installation Instructions



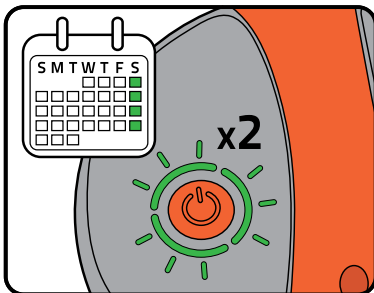
1. Permanently install the panel outdoors in direct full sun all day.



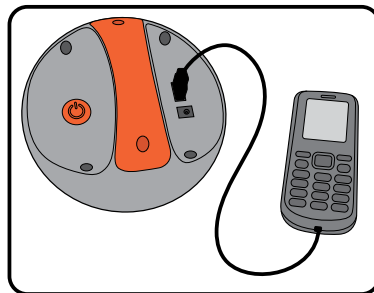
2. Keep lamp Indoors while charging. Plug panel into the lamp.



3. LEDs will flash when charging.



4. Fully charge the battery when first purchased and at least once per week. LEDs will double flash every 10 seconds when fully charged.



5. Use the USB output for charging phones and Barefoot Power Radio.

START UP Can I use the Go lamp straight away?

The battery should be fully charged before it is used for the first time. This is to allow the system to be fully calibrated to give you maximum use.

How do I activate the system?

Press the power button to activate ('wake up') the system for use.

When the lamp is in storage or not in use for an extended period of time the power button should be held down for 5-10 seconds to put the lamp into 'sleep' mode. This will shut down all functions and conserve battery power.

How do I charge the Go lamp?

Ensure that the lamp has been first activated by pressing the power button to allow charging to take place.

Place the solar panel outside in full sun and plug into the lamp (kept inside) to charge the battery.

How do I turn the Go lamp on?

Press the power button to turn the lamp on. Toggle through the power settings to turn the lamp off.

Is the Go Lamp waterproof?

The Go Lamp is water-resistant. Do not allow water to enter the USB or charging ports.

How does the Warranty work?

If the system appears to not be working properly then the system should be returned to your local distributor for evaluation. Ensure that you keep the original receipt and show it to the distributor.

Do not try and repair the system. If the system has been interfered with, damaged from an external force or submerged in water the warranty will be void.

CHARGING How do I tell if the battery is charging?

When charging, the battery status LED's will flash. When the battery is FULL all three LED's will double flash every ten seconds.

How do I tell how much charge is left in the battery?

Barefoot Go includes a battery status ring. One segment indicates 0-25% charge, two segments indicate 25-75% charge, and all three segments indicate 75-100% charge.

Each time the power button is pressed, the battery status indicators will illuminate for five seconds.

The lamp has automatically dimmed – is there something wrong?

No, this is just to warn that the battery is getting low and needs recharging.

When the battery is low, the lamp will automatically dim to a lower light setting and the low-battery LED (one segment) will flash.

Can the battery be totally drained?

No. The battery controller automatically turns the lamp and USB output off when the 'low battery' point is reached in order to protect the battery.

Can the battery be charged with an AC charger?

Yes. Ensure that the recommended AC charger is used.

What should I do if the lamp does not appear to be working for the runtimes as indicated?

First check that the USB is not being used. If it is power will be taken away from the lamp and the runtimes shortened.

Ensure that the lamp is fully charged and test the run time again. If there continues to be an issue contact your local distributor.

SOLAR PANEL Where should the solar panel be installed?

The solar panel must be permanently installed outside in full sunlight where it will receive direct sun and not be overshadowed by trees or buildings. Usually the best place is on top of the roof of a building.

To maximise solar power, the solar panel should be cleaned every three months. In very dusty areas, cleaning could be required up to every two weeks.

The panel can be fixed directly to the roof. For extra security the panel can be mounted in a metal frame fixed to the roof or the top of a pole. If the panel is mounted in a frame then allow a 10mm clearance round the panel surround for expansion in hot weather. If the panel is welded for security, ensure that the welding material does not come into contact with the panel.

It is important that the solar panel faces towards the equator at a slope equivalent to the latitude. For regions near the equator, the panel should be kept facing upwards, with a slope of 10 degrees to either the north or south. The slope helps the rain wash the panel.

Does the solar panel still produce power when it's cloudy?

Yes. The amount of power produced by the solar panel is proportional to the strength of the sun. During cloudy periods, the output of the solar panel can be as low as 10% of its rated power. The battery provides some backup to ensure the lights still work after a cloudy day.

Is the solar panel waterproof?

The panel is water-resistant. It is water-proof as long as the water runs off and does not enter the sealed connector box mounted on the rear of the panel. Best practise is to mount the panel with a gap between it and the roof to allow the water to run freely on the top and beneath.

Do not place the panel on the ground or where it could end up in a pool of water if it rains.

What should I do if the panel does not seem to be charging the Go lamp?

Remove the charging cable and check that the lamp has been activated by pressing the power switch. Re plug the cable from the panel into the lamp and start charging again. If this fails, try and charge the lamp from an AC adapter or USB output. If the lamp charges successfully the panel may be faulty and you should contact your local distributor. If the lamp still does not charge contact your local distributor.

The Go lamp and panel have a two year warranty.

USB PORT What devices can be charged using the USB port?

The Barefoot Go includes the standard 1 Amp USB output for charging mobile phones and other devices e.g. Mobile phones and Barefoot Power radio.

Some smart phones and tablets will draw more than 1 Amp so can't be charged. For these products Barefoot Connect systems must be used.

What happens if the USB is overloaded?

If the USB is overloaded the system will automatically shut down and reset after 5-10 seconds. Make sure you remove any device plugged into the USB output.

Can the lamp and the USB port operate at the same time?

Yes. However, if you are drawing a high load from the USB port the lamp may shutdown or auto-dim. If this happens remove the device from the USB and do not use the USB output again until that lamp has been charged to 100%.